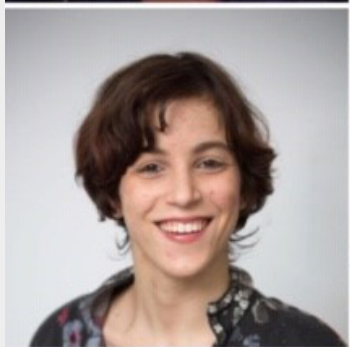
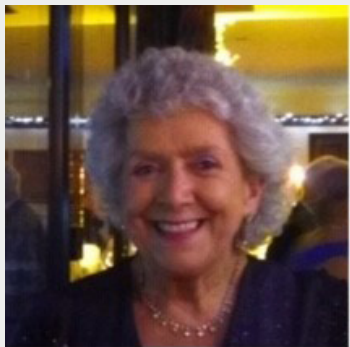


Profiles of Nominees Standing for Election to the GMCDP Executive Council



Anne Tober



In putting my name forward to be on the Exec Board I am mainly conscious of the impact the pandemic restrictions have had on everybody and especially disabled people and GMCDP members.

One of the many challenges that faced the organisation has been the determination to stay in close contact with members throughout. This has been possible if members have access to technology, but less so for members who don't have access to online resources. Staff members have in these instances kept in close contact with members via telephone calls. It is all credit to the staff and exec that GMCDP has continued to thrive so well through this most challenging of years.

As we start to recover from the restrictions, I look forward to re-addressing any gaps that may have arisen, in sending information in accessible formats to ensure that we reach all members.

Dennis Queen



I'm Mx Dennis Queen. I live in South Manchester with my wife and children, who are older teens now.

I just completed my second term on the Executive Committee, although I've been a GMCDP member since around 1998. I know my way around an agenda at last!

Since the Covid-19 lockdown began in March 2020 I have become more involved as a committee member, as we have had lots of work to do. I found I can attend more meetings using virtual meeting rooms, but some of the executive committee have found this much less accessible. We're all looking forward to the Post-Covid world when we can have everyone back together again in person, as well as using our internet skills.

During this time I helped update policies and position statements, helped create self advocacy information, helped facilitate Members Monthly Meetings and involved in campaign work - in particular around access to the new Peterloo Memorial, unveiled at the Bicentenary in 2020.

I would be proud to serve on your committee again this year.

Heather Davidson



I am a passionate campaigner, policy researcher and influencer for disabled people and those who are members of the LGBTQ community.

With over 12 years experience of working as a youth worker and working on advisory boards, I have brought disability issues to the forefront of every role I've been in, most notably at the People History's Museum where I have helped set up the 'Nothing About Us Without Us' project.

As co-chair of GMCDP, I have encouraged the membership to be more active, helped set up networking events so that there are regular opportunities for people to join in, connect and feel included. I have encouraged the GMCDP to broaden its skills set, valuing the contribution of each of its members. I want the GMCDP to be more visible and at the forefront of major campaigns in GM.

Inga Reichelt



Hello! My name is Inga and I was a GMCDP staff member from August 2018 to September 2019. This past year has been tough for many of us, and for GMCDP, but I am incredibly happy to witness how the organisation rose to all the challenges and adjusted to totally new circumstances. This past year as an Exec member I focused on developing the members' meetings, and investigating accessible technology options that would allow GMCDP to broaden our reach and engage new groups of disabled people.

In the future, I want to find more and better ways to get disabled people - new and existing members - more involved with GMCDP, using accessible and inclusive technology to hold combined online and offline hybrid meetings, and increasing our focus on how disabled people's oppression is interlinked with other forms of oppression. It would continue to be an honour to be involved in an organisation with such a strong history and excellent track record of defending disabled people's rights and furthering our participation.

Joe Whittaker



I was excluded from school at 13 .
I was not listened to by teachers.
I realised school did not want to
find ways of accommodating me,
the approach was rejection. My
40 years working in all sectors of
schooling, show me schools don't
accommodate differences, they
function on conformity and narrow
thinking. We have to value differences
in individuals and learn to listen to
different voices. GMCDP is a powerful
vehicle to hear different voices, to
channel into campaigns for change, I
support GMCDP who highlight human
rights as central for inclusive society for
ALL disabled people.

Maggie Griffiths



I first became involved in the Disabled People,Âs Movement and GMCDP as a non-disabled ally more than 30 years ago. I became a full member in 2014. Since becoming a member of the Executive Council, I have been extensively involved in the development of the policy and procedures needed to sustain an effective organisation and that are increasingly required by potential funders. I have been Deputy Chair since the last AGM.

During the last year I have been actively involved in a number of GMCDP,Âs subgroups and initiatives to involve members. If I am re-elected to the executive council, I would like to continue this important work.

Mathias Warrington



I have been involved in GMCDP for the last nine years and have been on the Executive Council since 2014.

For the last couple of years I have been the treasurer and would like the opportunity to continue in this role.

As treasurer, I am working towards modernising GMCDP's banking and financial procedures.

I'm currently involved in the funding subgroup, which is responsible for finding appropriate funding opportunities that don't compromise our principles. In the past I have also been an active member of the campaigning subgroup.

I feel it is incredibly important that GMCDP continue to be at the very forefront of the disabled people's movement.

In my spare time I enjoy reading, gaming (both board and video) and researching history.

Paul Doyle



I have a PhD. The title of my thesis is, A study to raise the voices of young disabled people preparing for life beyond segregated school: the power of disability research in promoting advocacy. The fieldwork for this piece of research took place in a special school. One of the main outcomes of the work was that people with the most severe impairments were able to take part in the research

I can encourage people with multiple disabilities, in particularly those with speech impairments, to speak up and say how they could have more independence in their lives. It needs to be recognised that people with multiple disabilities are full members of society

Pete Marshall



I am a member of the exec already: I have been for the last year and a half. It has been a tumultuous time both for GMCDP and for life in general and our community specifically. The combination of covid has required a lot of hard work by everyone to make sure GMCDP to continue running and a lot of good work has happened.

I have been working to ensure adequate funding goes on our online presence and ensure we are available easily to anyone; to expand our accessibility and integrate hybrid systems into our meetings.

Steve Graby



I have been on GMCDP's Executive board since 2013 and was deputy chair in 2019 and co-chair in 2020-21, as well as a founder member and Exec lead of the newly formed Housing Working Group.

I have a PhD in Disability Studies from the University of Leeds and I am passionate about the need to connect research, theories and principles (such as the social model of disability and independent living) with practical action for the liberation of disabled people.

If re-elected I will push for GMCDP to actively include disabled people of all ages, impairment groups and intersectional groups, and to find practical ways to make real changes for disabled people in Greater Manchester on issues such as accessible housing, personal assistance and financial security, which have become even more vital to fight for during the last year.